

# SWP

## Controllers for LEDs Instruction manual



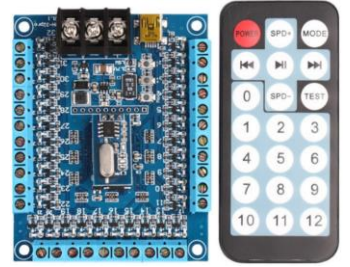
SWP-RH4



SWP-RH8



SWP-RH18



SWP-RH32

\* remote control is not included in the package, sold separately

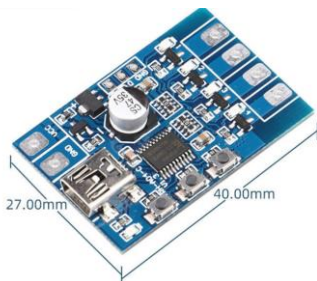
### To our valued users:

Thank you for purchasing the RH4/ RH8/ RH18/ RH32 LED signage dynamic effects controllers. Please read this manual carefully before installation and use in order to install and use it correctly, and at the same time, please keep this manual for future maintenance and reference.

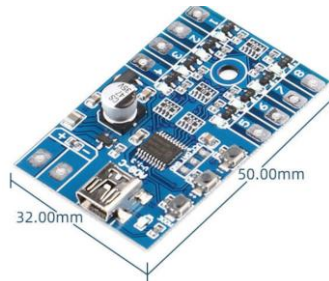
### Functional features:

- 10 default light dynamic effect programmes for each controller;
- the ability to create your own effects (1 effect);
- control both with the remote control and the buttons on the controller;

### Dimensions of the controllers



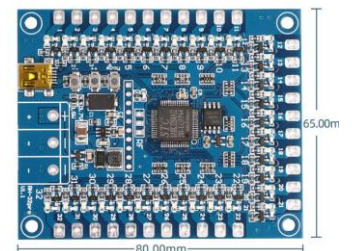
SWP-RH4



SWP-RH8



SWP-RH18



SWP-RH32

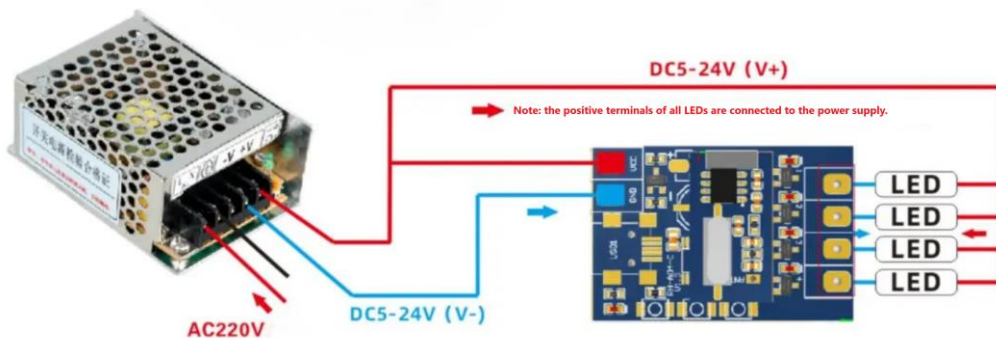
**Model parameters:**

The number in the controller's digit indicates the number of channels. Area of application: advertising signs, pharmacy crosses, signs (DC 5-24V).

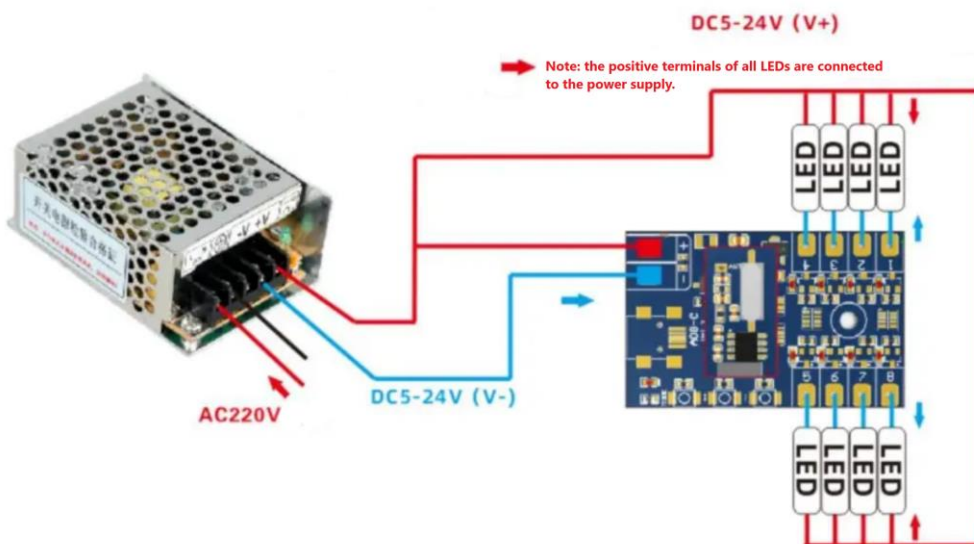
Model	Type of control	Input/output	Load at 5V	Load at 12V	Load at 24V	Light source	Working temperature
RH4	Buttons on the controller + remote control	DC5-24V	4*15W*85%	4*36W*85%	4*72W*85%	LED	-5°C-55°C
RH8	Buttons on the controller + remote control	DC5-24V	8*15W*85%	8*36W*85%	8*72W*85%	LED	-5°C-55°C
RH18	Buttons on the controller + remote control	DC5-24V	18*15W*85%	18*36W*85%	18*72W*85%	LED	-5°C-55°C
RH32	Buttons on the controller + remote control	DC5-24V	32*15W*85%	32*36W*85%	32*72W*85%	LED	-5°C-55°C

**Installation and connection diagram:**

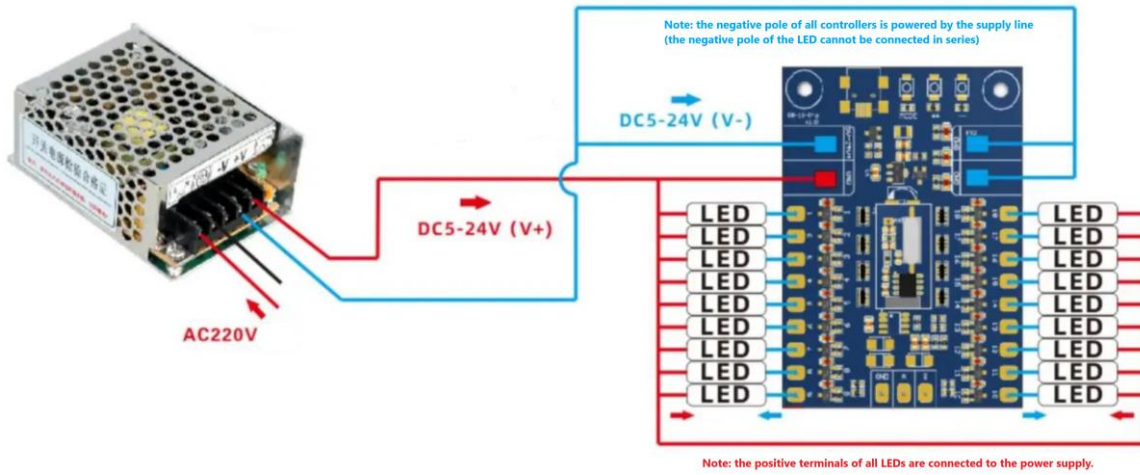
**RH-4**



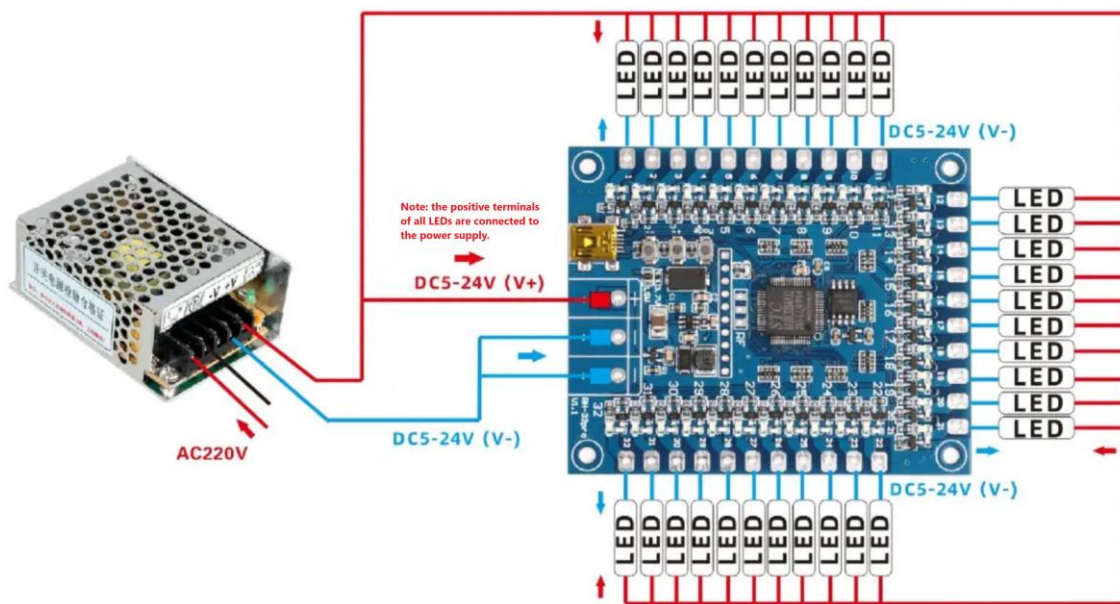
**RH-8**



## RH-18

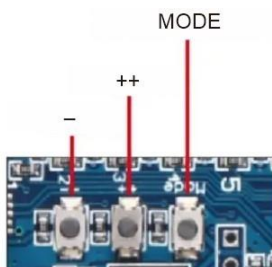


## RH-32



### Operating instructions:

1. Connect the load line first, then the power line; before switching on, make sure that there is no short circuit between the wires and that the 'minus' is taken from the controller channels, and not vice versa
2. Make sure that the 'minus' is taken from the controller channels, and not vice versa
3. Use the buttons on the controller/remote to adjust the desired dynamic range



Control buttons

- 1) Short press MODE to switch effects
- 2) Press MODE and hold for 3 seconds to switch between the built-in effects and the one recorded according to your TK
- 3) Press MODE for 8 seconds and then press the button on the remote control to connect the remote control
- 4) Press MODE for 15 seconds to delete the connected remote control from the memory
- 5) «--» reduce the speed of dynamics
- 6) «++» accelerate the speed of dynamics



Button	Function.
POWER	On/off
SPD+	Speed+.
MODE	Switch between built-in effects and recorded effects according to your specifications
<<	Preliminary programme
>	Pause
>>	Next programme
0	In test mode, all channels are switched on/off
SPD-	Speed-
TEST	Allows you to switch on/off the desired channel using the numbers on the remote control
1	Programme 1 / test mode channel 1
2	Programme 2 / test mode channel 2
3	Programme 3 / test mode channel 3
4	Programme 4 / test mode channel 4
5	Programme 5 / test mode channel 5
6	Programme 6 / test mode channel 6
7	Programme 7 / test mode channel 7
8	Programme 8 / test mode channel 8
9	Programme 9 / test mode channel 9
10	Programme 10 / test mode channel 10
11	Test mode channel 11
12	Test mode channel 12