

SPECIFICATION

SPLIT NEON STRIP FOR MAKING NEON SIGNS



Specification:

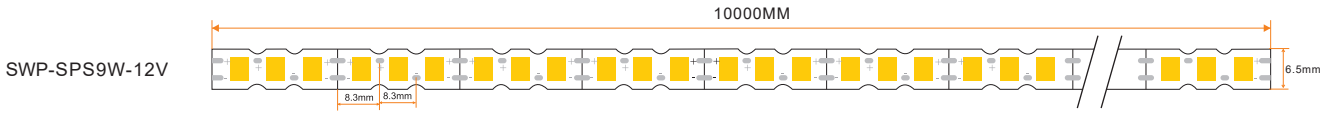
Part 1: Silicone Tube Specific:

Part No.	SWP-SPN6MM											
Size Drawing												
Available Color												
	White	Yellow	Blue	Green	Red	Purple	Pink	Orange	Rose Red	Ice Blue	Lemon Yellow	Mars Green
Packing	50m per roll					50m per roll			50m per roll			
Cutable	Anywhere it need to be cut											

Part 2: LED Strip Specific:

Part No.	SWP-SPS9
Input Voltage	DC12V
Neon sign Connection	outer with DC 5521 connectors or bare wire
Power	9W/m
LED Chip	2835
LED Qty /m	120
Width	6.5mm
Min. Cutting	8.3MM
Available Color	3000K,4000K,6500K,12000K,red,yellow,blue,green,orange,pink,purple,rose red,ice blue,Mars Green,Lemon Yellow,
Package	10m/roll

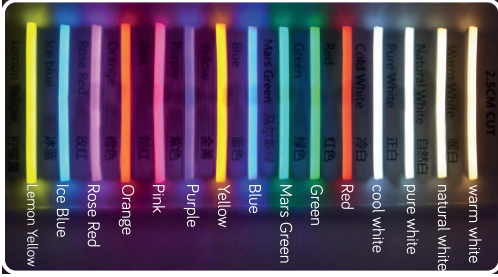
LED strip Drawing:



SWP-SPS9W-12V

Neon Sign emitting color and corresponding material options:

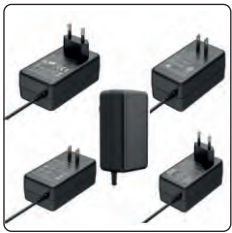
Available emitting colors:



Best OPTION: LED strip color is same as silicone tube color

LED strip color	Warm white 3000K	Natural white 4000K	Pure White 6500K	Cool White 10000K	Red	Yellow	Blue	Green	Orange	Pink	Purple	Ice Blue	Rose Red	Lemon Yellow	Mars Green
Silicone Tube Color	White	White	White	White	Red	Yellow	Blue	Green	Orange	Pink	Purple	Ice Blue	Rose Red	Lemon Yellow	Mars Green
Final Emit color															

Accessories for making neon signs:



Adapter
The power of adapter depends on the LED strip length and power.



Chuck for CNC graver machine,
accuracy 0.008 mm



Milling Cutter
It is used on CNC machine, to carve groove for neon signs, strip width 6 mm, base plate thickness ≥ 6 mm, cutting depth 4.2 mm



Cutting Knife 90degree
Used to cut neon strip where it will bend at the corners



Cutting Knife Round
It is used to cut the end of silicone tape



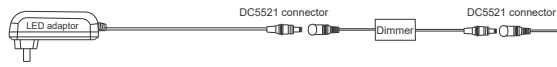
Transparent Wire
There are many different length: 5CM,7CM,10CM,15CM



Transparent Wire with DC female connector
It is 2m long. It is used to connect with adapter /dimmer/controller

Wiring Diagram for neon signs :

Single Color neon sign

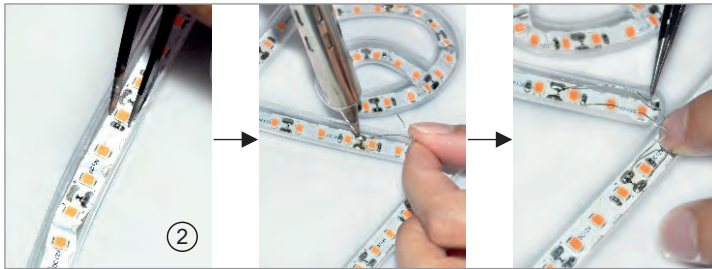


hello

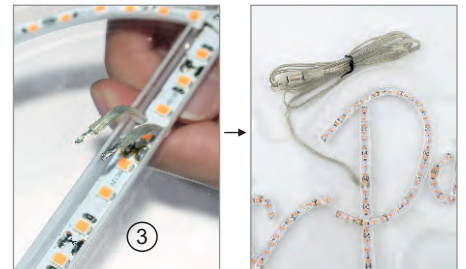
Steps to make a neon signs :



1. Carve a groove with a milling cutter.



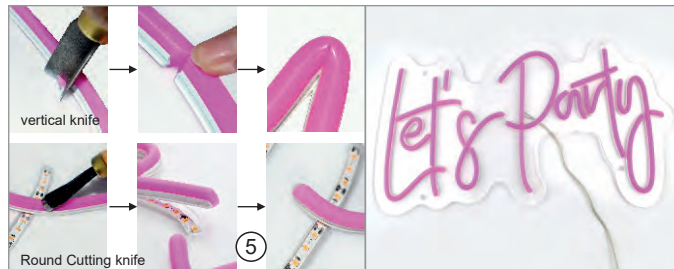
2. Put LED strip into the groove. Using transparent wire to connect the LED strips.



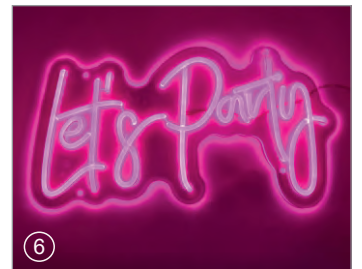
3. Wiring a transparent DC wire on the LED strip. It is a fast connection to connect dimmer and adapter,



4. Give power to LED strip to test if all LED strip in good quality.



5. Cut the corresponding length according to the neon size. At the corners, using vertical knife to cut and then bend to the correct angle. At the end, Using Round Cutting knife to cut. then put into the groove.



6. Put an adapter to light the LED neon sign.