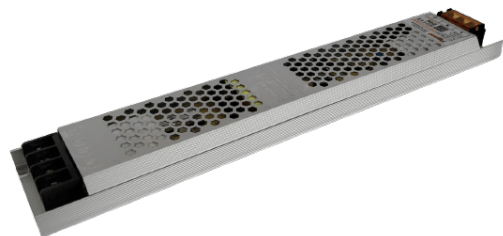


### SWP-NF12-200W

#### Features



- Start at ultra-low temperature - low temperature can reach -30°C;
- Protections: Short circuit/Overload
- Cooling by free air convection
- 100% full load burn-in test
- Suitable for LED lighting
- Products through CE, BIS Certification
- In line with world lighting safety regulations

CE IP67 SELV

#### Specifications

OUTPUT	DC VOLTAGE	12V
	RATED CURRENT	16.7A
	CURRENT RANGE	0~16.7A
	RATED POWER	200W
	RIPPLE & NOISE (max.)	120mV
	VOLTAGE TOLERANCE	±5%
INPUT	VOLTAGE RANGE	180~240VAC
	FREQUENCY RANGE	47 ~ 63 Hz
	POWER FACTOR (Typ.)	PF>0.7/220VAC
	EFFICIENCY (Typ.)	>84%
	AC CURRENT (Typ.)	1.76A/220VAC
	INRUSH CURRENT (Typ.)	COLD START 60A/220V AC
PROTECTION	Short circuit	Protection type: recovers automatically after fault condition is removed
	Overload	Overload protected @ 120-150% above peak rating
	Over temperature	Protection type: shut down o/p voltage, re-power on to recover
ENVIRONMENT	WORKING TEMP.	-30 ~ +50°C
	WORKING HUMIDITY	20 ~ 90% RH non-condensing
	STORAGE TEMP., HUMIDITY	-30 ~ +85°C, 10 ~ 95% RH
SAFETY & EMC	SAFETY STANDARDS	CE Mark (LVD), ip20
	WITHSTAND VOLTAGE	I/P-O/P:1.5KVAC I/P-GND:1.5KVAC
	EMC Test Standards	EN55015:2013;EN61547:2009; EN61000-3-2:2014; EN61000-3-3:2013

