

COB strip



Linear luminescence makes it uniform lighting. Input voltage DC12V.

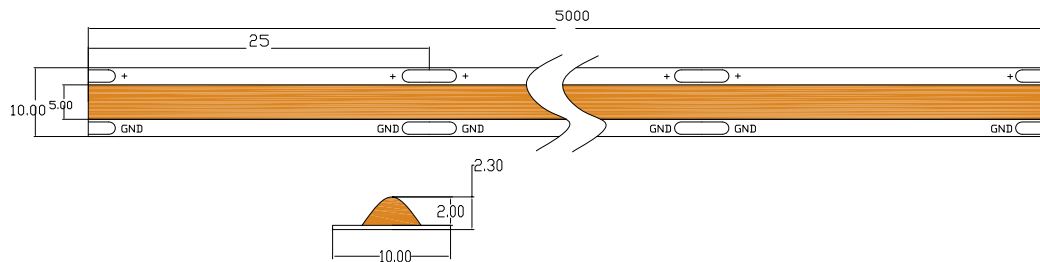
Features:

- Ip65, Ip20 rating
- No hotspots
- High lumen output (up to 1200lm/m)
- Wide viewing angle (150°)
- Storage Temperature: -20°C~75°C
- Operating Temperature: -20°C~60°C
- Humidity tolerance: 40-70% RH

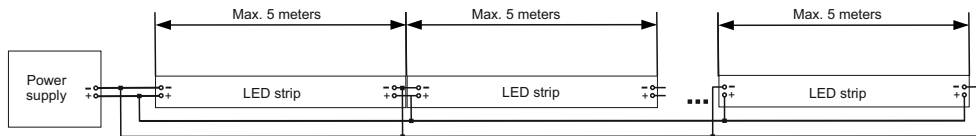
Application:

- Commercial building
- Residential building
- Entertainment lighting
- Hotels
- Signages

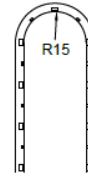
Size



Connection



Maximum Flexibility Precaution:



NOTE: DO NOT BEND TO A RADIUS OF LESS THAN 0.59 INCH



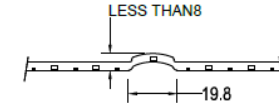
NOTE: SHARP BENDING ISN'T ALLOWABLE



NOTE: DO NOT TWIST MORE THAN 90° OVER THE LENGTH OF ONE 24V SEGMENT/ TWO 12V SEGMENTS (4" TOTAL LENGTH)

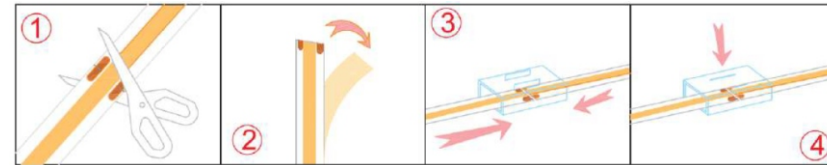


NOTE: DO NOT HORIZONTAL BEND TO A RADIUS OF LESS THAN 18 INCH



NOTE: DO NOT AXIAL BEND TO THE HEIGHT OF MORE THAN 19.8mm WITHIN 0.78 INCH SEGMENT

Cutting and Connecting Instruction:



1. Field cut the light strip at everywhere with soldering pads.
2. Peel out the 3M adhesive tape
3. Put together the 2 light strips and the connector, AB-TSC-06-2
4. Make sure the connector fastens the lights

Packaging information

Packaging	in a coil	In a box	In a box
Number	10 m	100 m	1000 m
Weight	0,2 kg	2 kg	20 kg

Technical information

Available colors:	<input type="radio"/>
Power	11,0W/M
Light flux	1260 lm
Crystal type	COB
Operating voltage	12V DC
Glow temperature	<input type="radio"/> 2700K, 3000K, 4000K, 6500K
Protection class	IP 20, IP 65
Working temperature	-30 +50 °C